

FEATURES

10 Computational Biomechanics: Making Strides Toward Patient Care

BY REGINA NUZZO, PhD

21 Biologically Inspired Computation: Algorithms That Mimic Nature's Tricks

BY MEREDITH ALEXANDER KUNZ

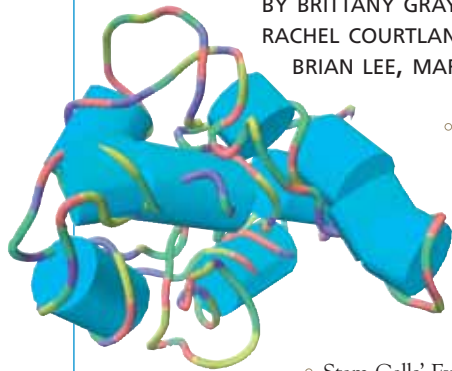
DEPARTMENTS

1 GUEST EDITORIAL: INFRASTRUCTURE AND WORKFORCE NEEDS IN BIOMEDICAL INFORMATICS AND COMPUTATIONAL BIOLOGY

BY PETER LYSTER, PhD

2 NEWS BYTES

BY BRITTANY GRAYSON, ALLA KATZNELSON, CLARA MOSKOWITZ,
RACHEL COURTLAND, MEGHA SATYANAYARANA, SARAH CP WILLIAMS,
BRIAN LEE, MARIA JOSÉ VIÑAS, EWEN CALLOWAY, MARCUS WOO



- Unraveling the Complex Functions of Proteins
- Neurons Seek Their Own Solution
 - Two Ways To Merge
 - Cancer Proteins Show Off Their Networking Skills
 - Watching Blood Vessels Grow and Shrink
 - Opening Airways
 - New Algorithm Finds Stories in Biomedical Literature
 - A Fast Lane Through the Stomach
- Stem Cells' Existential Crisis Explained
- Connecting the (Microarray) Dots from Drug to Disease

28 SIMBIOS NEWS: NOW AVAILABLE: USER-FRIENDLY RNA DYNAMICS APPLICATIONS BY KATHARINE MILLER

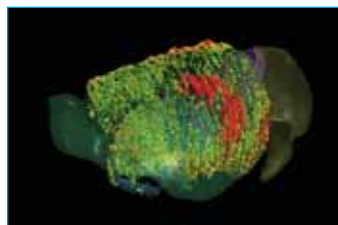
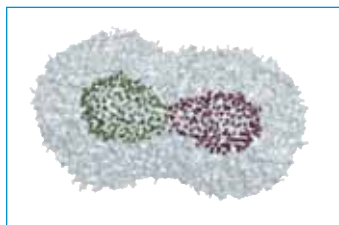
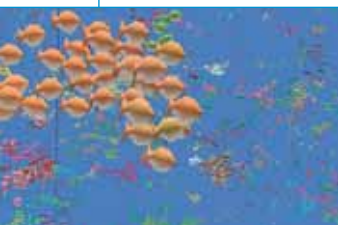
29 UNDER THE HOOD: PARTICLE SWARM OPTIMIZATION: TAKING A CUE FROM MOTHER NATURE BY JACO SCHUTTE, PhD

30 SEEING SCIENCE: ALLEN BRAIN ATLAS LAUNCHED BY KATHARINE MILLER

ON THE COVER:

Simulations of gait, like the one illustrated here, are being used by researchers in biomechanics to quantify how individual muscles contribute to an observed movement. This simulation represents one of the most detailed muscle-actuated simulations generated to date. Image courtesy of Chand John, Frank C. Anderson, and Scott Delp.

COVER ART BY RACHEL C. JONES OF AFFILIATED DESIGN



Winter 2006/07

Volume 3, Issue 1
ISSN 1557-3192

Executive Editor

David Paik, PhD

Managing Editor

Katharine Miller

Science Writers

Katharine Miller, Regina Nuzzo, PhD,
Meredith Alexander Kunz,
Brittany Grayson, Alla Katznelson,
Clara Moskowitz, Rachel Courtland,
Megha Satyanayarana, Sarah CP
Williams, Brian Lee, Maria José Viñas,
Ewen Calloway, Marcus Woo

Community Contributors

Jaco Schutte, PhD
Peter Lyster, PhD

Layout and Design

Affiliated Design

Printing

Advanced Printing

Editorial Advisory Board

Russ Altman, MD, PhD
Brian Athey, PhD
Andrea Califano, PhD
Valerie Daggett, PhD
Scott Delp, PhD
Eric Jakobsson, PhD
Ron Kikinis, MD
Isaac Kohane, MD, PhD
Paul Mitiguy, PhD
Mark Musen, MD, PhD
Tamar Schlick, PhD
Jeanette Schmidt, PhD
Michael Sherman
Arthur Toga, PhD
Shoshana Wodak, PhD
John C. Wooley, PhD

**For general inquiries,
subscriptions, or letters to the editor,
visit our website at
www.biomedicalcomputationreview.org**

Office

Biomedical Computation Review
Stanford University
318 Campus Drive
Clark Center Room S231
Stanford, CA 94305-5444

Biomedical Computation Review is published quarterly by Simbios National Center for Biomedical Computing and supported by the National Institutes of Health through the NIH Roadmap for Medical Research Grant U54 GM072970. Information on the National Centers for Biomedical Computing can be obtained from <http://nihroadmap.nih.gov/bioinformatics>. The NIH program and science officers for Simbios are:

Peter Lyster, PhD (NIGMS)
Jennie Larkin, PhD (NHLBI)
Jennifer Couch, PhD (NCI)
Semahat Demir, PhD (NSF)
Charles Friedman, PhD (NLM)
Peter Highnam, PhD (NCRR)
Jerry Li, MD, PhD (NIGMS)
Wen Masters, PhD (NSF)
Richard Morris, PhD (NIAID)
Grace Peng, PhD (NIBIB)
David Thomassen, PhD (DOE)
Ronald J. White, PhD (NASA/USRA)