

FEATURES

8 Computing the Ravages of Time: Using Algorithms To Tackle Alzheimer's Disease

BY REGINA NUZZO, PhD

20 Genetic Variants and Ill Health: Scanning 500,000 SNPs Yields Gene-Disease Connections

BY HANNAH HICKEY

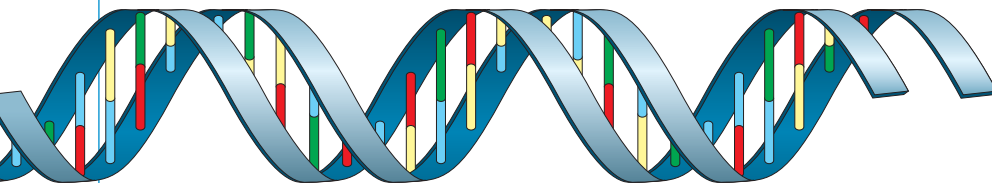
DEPARTMENTS

1 GUEST EDITORIAL: IT'S NOT WHAT YOU KNOW, BUT WHAT YOU DON'T KNOW... BY KARIN A. REMINGTON, PhD

2 NEWSBYTES

BY KATHARINE MILLER, LOUISA DALTON, KRISTIN SAINANI, PhD
AND MATTHEW BUSSE, PhD

- Simulating Membrane Transport
- Flexible Molecular Computer Functions Inside a Cell
- The Spontaneous Brain
- An Uphill Challenge
- Modeling Early Evolution
- Teaching Resource: Computing Life



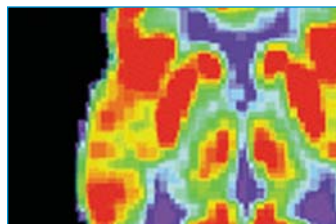
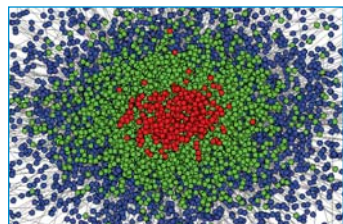
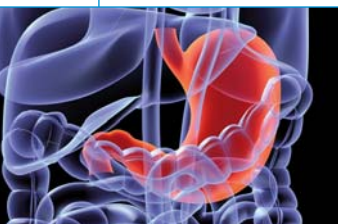
31 UNDER THE HOOD: SCALE-FREE NETWORKS IN CONTEMPORARY BIOLOGY BY CHEOL-MIN GHIM, PhD, ALI NAVID, PhD, AND EIVIND ALMAAS, PhD

32 SIMBIOS NEWS: A GIANT LEAP FOR OPEN SOURCE SIMULATION BY KATHARINE MILLER

33 PUTTING HEADS TOGETHER: CONFERENCES/SYMPOSIA

34 SEEING SCIENCE: TALKING HEADS BY KATHARINE MILLER

COVER ART BY
JAMES BENNETT OF AFFILIATED DESIGN



Fall 2007

Volume 3, Issue 4
ISSN 1557-3192

Executive Editor
David Paik, PhD

Managing Editor
Katharine Miller

Science Writers
Katharine Miller
Hannah Hickey
Regina Nuzzo, PhD
Louisa Dalton
Matthew Busse, PhD
Kristin Cobb, PhD

Community Contributors

Karin A. Remington, PhD
Ali Navid, PhD
Cheol-Min Ghim, PhD
Eivind Almaas, PhD

Layout and Design
Affiliated Design

Printing
Advanced Printing

Editorial Advisory Board

Russ Altman, MD, PhD
Brian Athey, PhD
Andrea Califano, PhD
Valerie Daggett, PhD
Scott Delp, PhD
Eric Jakobsson, PhD
Ron Kikinis, MD
Isaac Kohane, MD, PhD
Paul Mitiguy, PhD
Mark Musen, MD, PhD
Tamar Schlick, PhD
Jeanette Schmidt, PhD
Michael Sherman
Arthur Toga, PhD
Shoshana Wodak, PhD
John C. Wooley, PhD

For general inquiries,
subscriptions, or letters to the editor,
visit our website at
www.biomedicalcomputationreview.org

Office

Biomedical Computation Review
Stanford University
318 Campus Drive
Clark Center Room S231
Stanford, CA 94305-5444

Biomedical Computation Review is published quarterly by Simbios National Center for Biomedical Computing and supported by the National Institutes of Health through the NIH Roadmap for Medical Research Grant U54 GM072970. Information on the National Centers for Biomedical Computing can be obtained from <http://nihroadmap.nih.gov/bioinformatics>. The NIH program and science officers for Simbios are:

Peter Lyster, PhD (NIGMS)
Jennie Larkin, PhD (NHLBI)
Jennifer Couch, PhD (NCI)
Semahat Demir, PhD (NSF)
Peter Highnam, PhD (NCRR)
Jerry Li, MD, PhD (NIGMS)
Richard Morris, PhD (NIAID)
Grace Peng, PhD (NIBIB)
David Thomassen, PhD (DOE)
Ronald J. White, PhD (NASA/USRA)
Jane Ye, PhD (NLM)
Yuan Liu, PhD (NINDS)